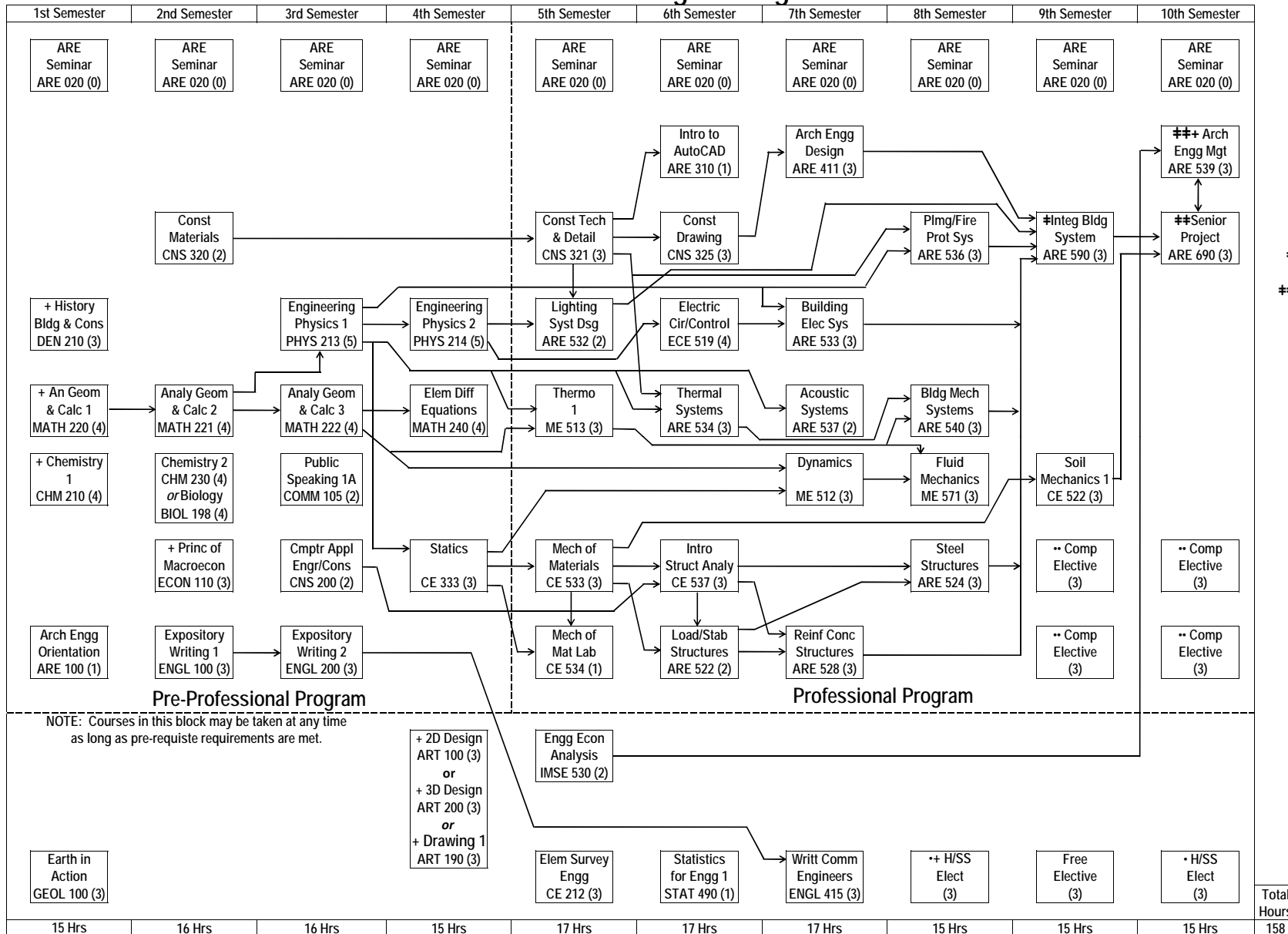
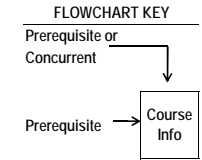


Architectural Engineering



FALL 2011



Must be taken the semester immediately prior to graduation.
Must be taken together.

K-State 8 Tag +	ARE
Aesthetic Experience and Interpretive Understanding	ART Elect
Empirical and Quantitative Reasoning	MATH 220
Ethical Reasoning and Responsibility	ARE 539
Global Issues and Perspectives	ECON 110
Historical Perspectives	DEN 210
Human Diversity within the U.S.	H/SS Elect
Natural and Physical Sciences	CHM 210
Social Sciences	ECON 110

Fall 2011 • Humanities and Social Science (H/SS) Electives are to be selected from the official College of Engineering H/SS course list.
 •• Complementary Electives are to be selected from the current approved Department list.