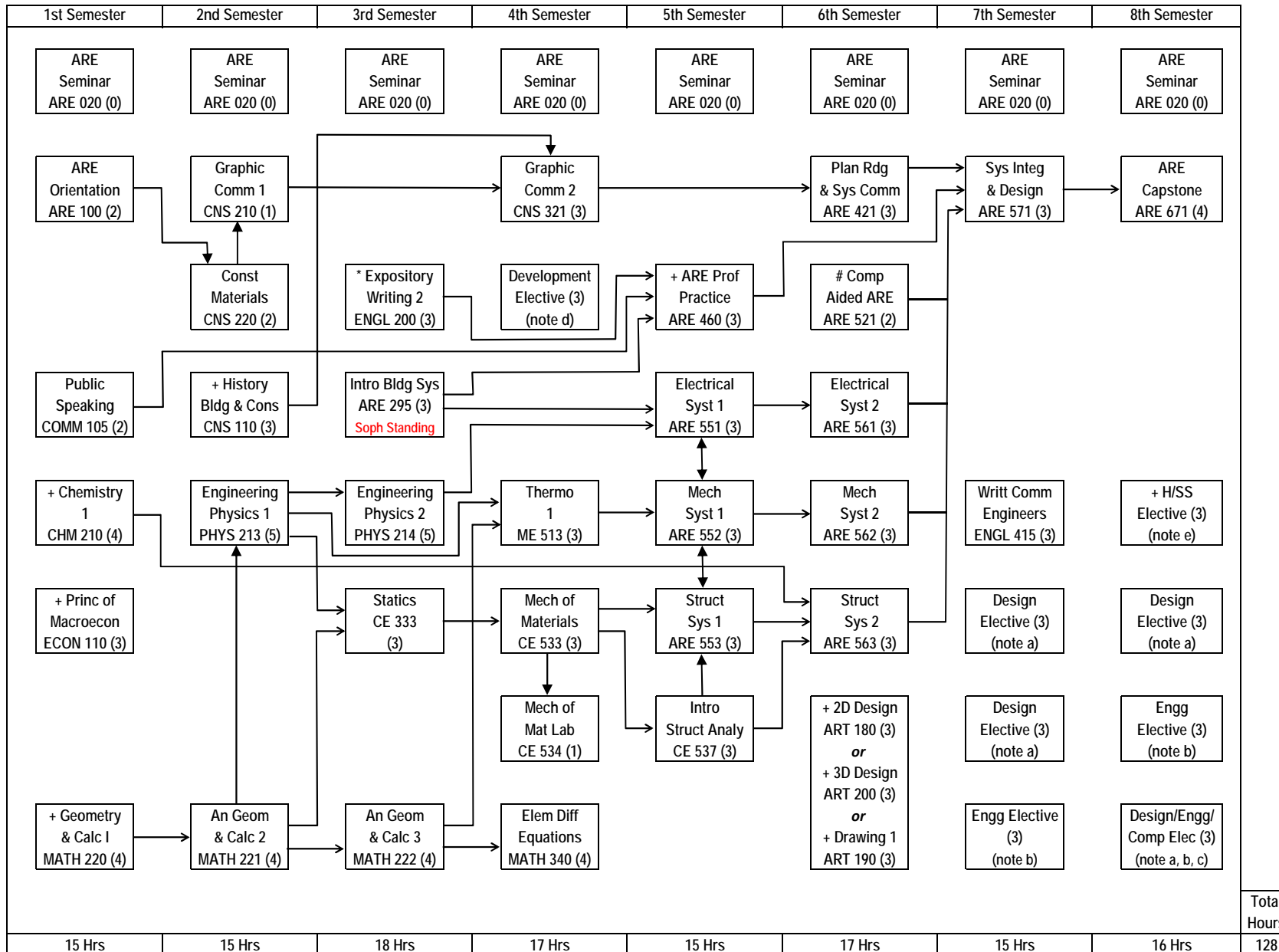


# Architectural Engineering



Fall 2021

## FLOWCHART KEY



K-State 8 Tag †	ARE
Aesthetic Experience and Interpretive Understanding	ART Elect
Empirical and Quantitative Reasoning	MATH 220
Ethical Reasoning and Responsibility	ARE 460
Global Issues and Perspectives	ECON 110
Historical Perspectives	CNS 110
Human Diversity within the U.S.	H/SS Elect
Natural and Physical Sciences	CHM 210
Social Sciences	ECON 110

Fall 2021

- a Design Electives are to be selected from the current approved Department list. Minimum 9 hours, maximum 12 hours required.
- b Engineering Electives are to be selected from the current approved Department list. Minimum 6 hours, maximum 9 hours required.
- c Complementary Electives are to be selected from the current approved Department list. Minimum 0 hours, maximum 3 hours required.
- d Development Electives are to be selected from the current approved Department list. 3 hours required.
- e Humanities and Social Science (H/SS) Electives are to be selected from the official College of Engineering H/SS course list and have the 'Human Diversity within the U.S.' K-State tag. ARCH 301 is NOT approved for ARE/CNS majors.
- # A "C" or better in ARE 551, 552 or 553 is required before enrolling in ARE 521.
- \* ENGL 100 is required before students may enroll in ENGL 200.